

lake norman

# WOMAN

CELEBRATING THE SUCCESS OF WOMEN

**LKN WOMEN  
YOU'LL MEET IN  
THIS ISSUE:**

- \* A LIFELONG LEARNER
- \* A REAL GO-GETTER
- \* A CHAMPION OF JUSTICE
- \* RULE FOLLOWERS AND RULE BREAKERS....

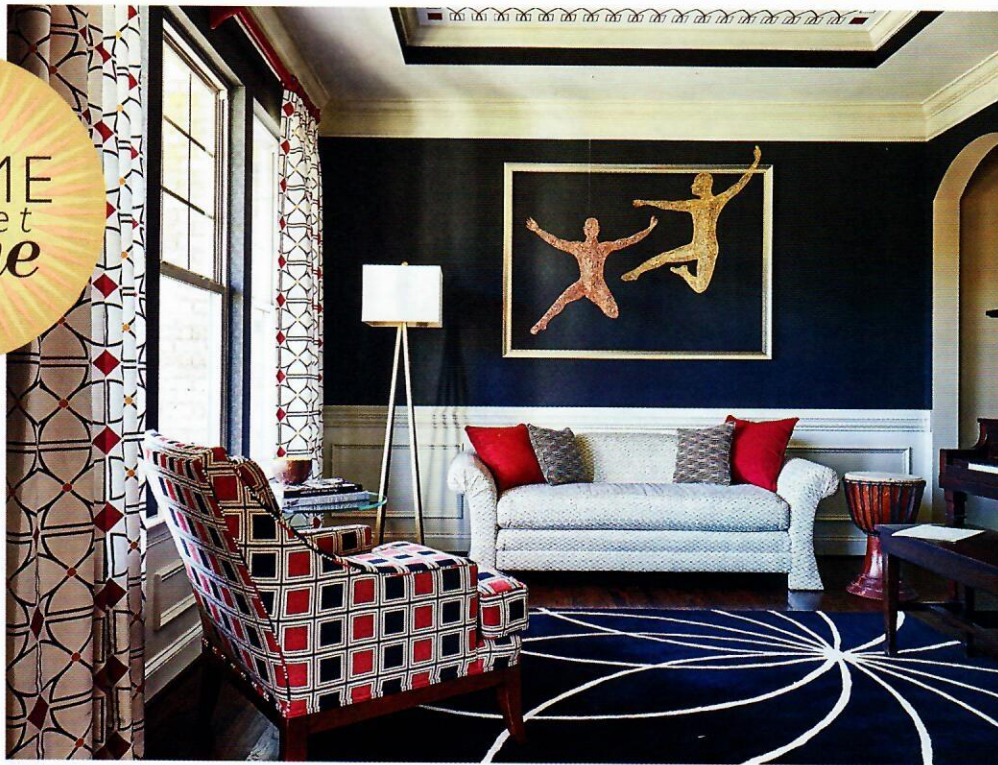
**WHICH ARE YOU?**



make your own  
**rules!**

**RULES**  
*for breaking*  
**THE RULES!**

featuring **Laura VanSickle** of **ClosetsbyDesign**



— RULES —  
 on  
*BREAKING*  
 the  
 — RULES —

By: Starr Miller

**IN LIFE, BUSINESS, DESIGN, AND ART,** it is important to break the rules to distinguish yourself, your product, or your project. For this I am all in! But I do believe that one should know the rules prior to breaking them.

To live a life of your choosing, you must first learn what the law of society is and work within that law to develop your own personal road map and value system. To build a business, there are fundamentals of profit and loss that we must master before we look to new ways to source or develop product. Like these, fine art and design are born of the fundamentals first and then layered with the eye of the creative.

Picasso did not start with cubism—he was first a fine portrait artist. He knew how to mix and blend paints. He knew proportion, scale, emphasis, hierarchy, balance, unity,

rhythm, contrast, shape, form, color, pattern, value, space, and perspective. Once he mastered those skills, he then knew how to manipulate the paint and canvas to bend to his will. You will rarely find a master who has not studied and learned the principals of their trade prior to breaking out of that box. Even The Walt Disney Company® requires a master's degree in design for those interviewing. I looked it up.

There are “rules” that we all learned from our mothers or design magazines that are not truly design *rules*. They are just rules to help you make decisions if you are not a professional. Here are some of those rules:

- All metals have to match
- Drapery rods should match the metal in the room
- Period of furnishings needs to match
- Fabrics need to match
- Only paint a large room with dark paint
- Ceilings should be white
- Match paint color exactly to your fabric
- Avoid plants with colorful petals and foliage
- All woods should match
- Art should match the room

None of these are true! They are safe. They do help you not make mistakes if unsure. The key is knowing the difference. These types of rules will get you a lovely home that is safe and, while pretty, will not be considered art or design. It will be decorated. The rules of design are the same as the rules of art that Picasso learned. The intense study of these rules gives you license to break them.

*(The photo above is one example. All woods do not match, all periods of furniture do not match. It is a small room with dark wallpaper. The ceiling has color and detail. The art is actually floating in the room with a simple frame on the wall to ground it, and the drapery rods are red.)*



Starr Miller is the president and principal designer at StarrMiller Interior Design, Inc. Contact her at 704.896.3321 or visit [www.starrmiller.com](http://www.starrmiller.com).